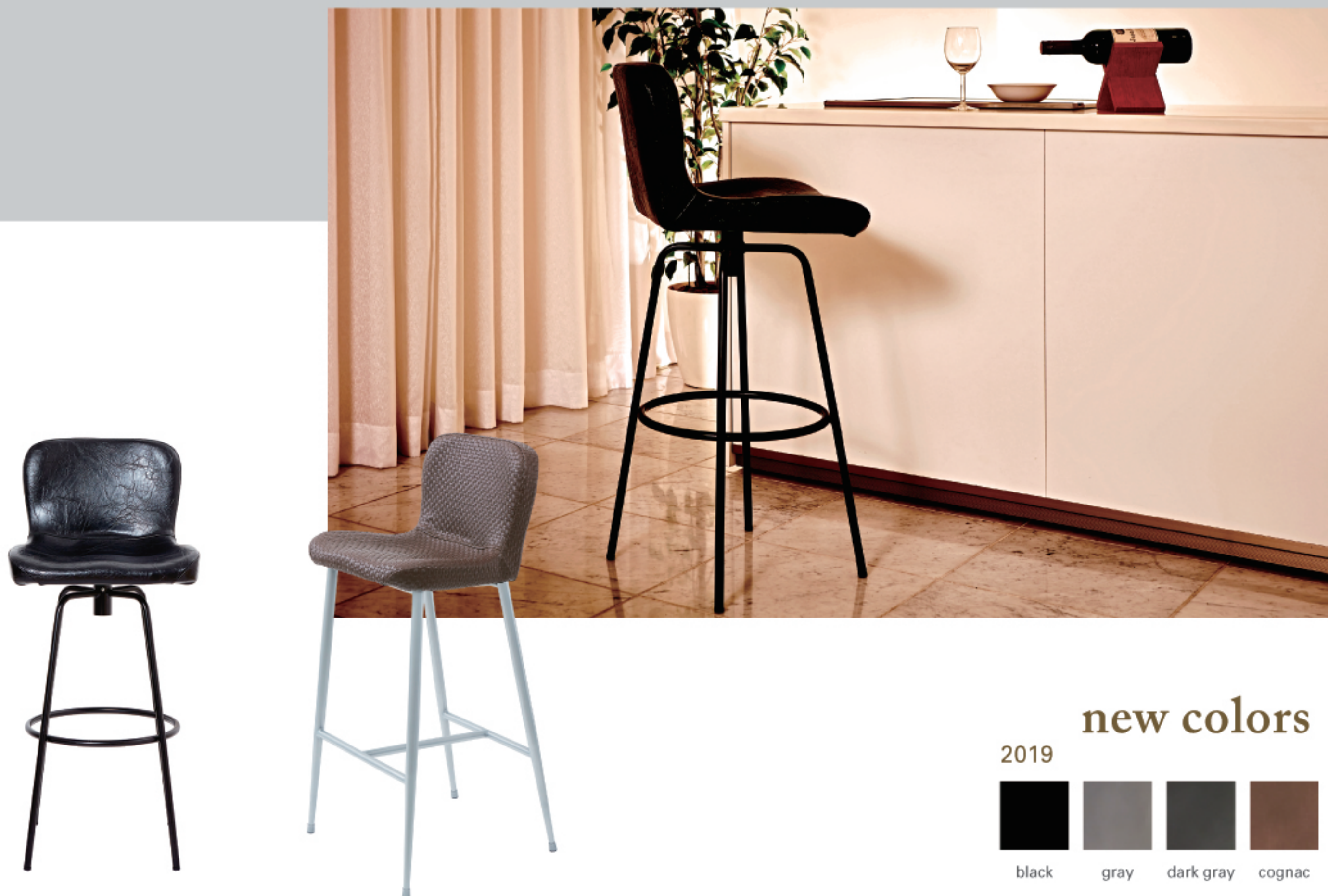


P!NTO  
C H A I R  
*mini*

Japanese ergonomic seat  
Stool

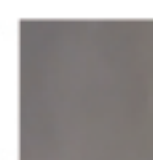


new colors

2019



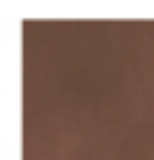
black



gray



dark gray



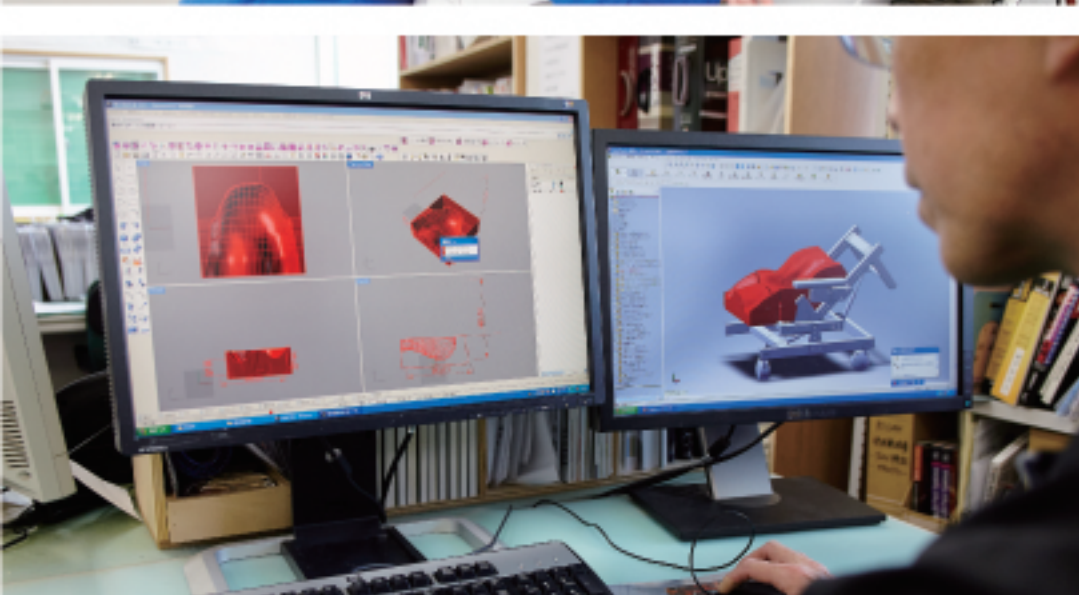
cognac

**Small in size but big in comfort.**

When we created "mini", we had in mind the reception desks, high tables and bars. Once seated, each bone is aligned properly. Perfect for a relaxed use. Enriched with comfort and good stability, it provides a moment of quality.

Designed in Japan, Production in Japan and Italy, Distribution from Italy.

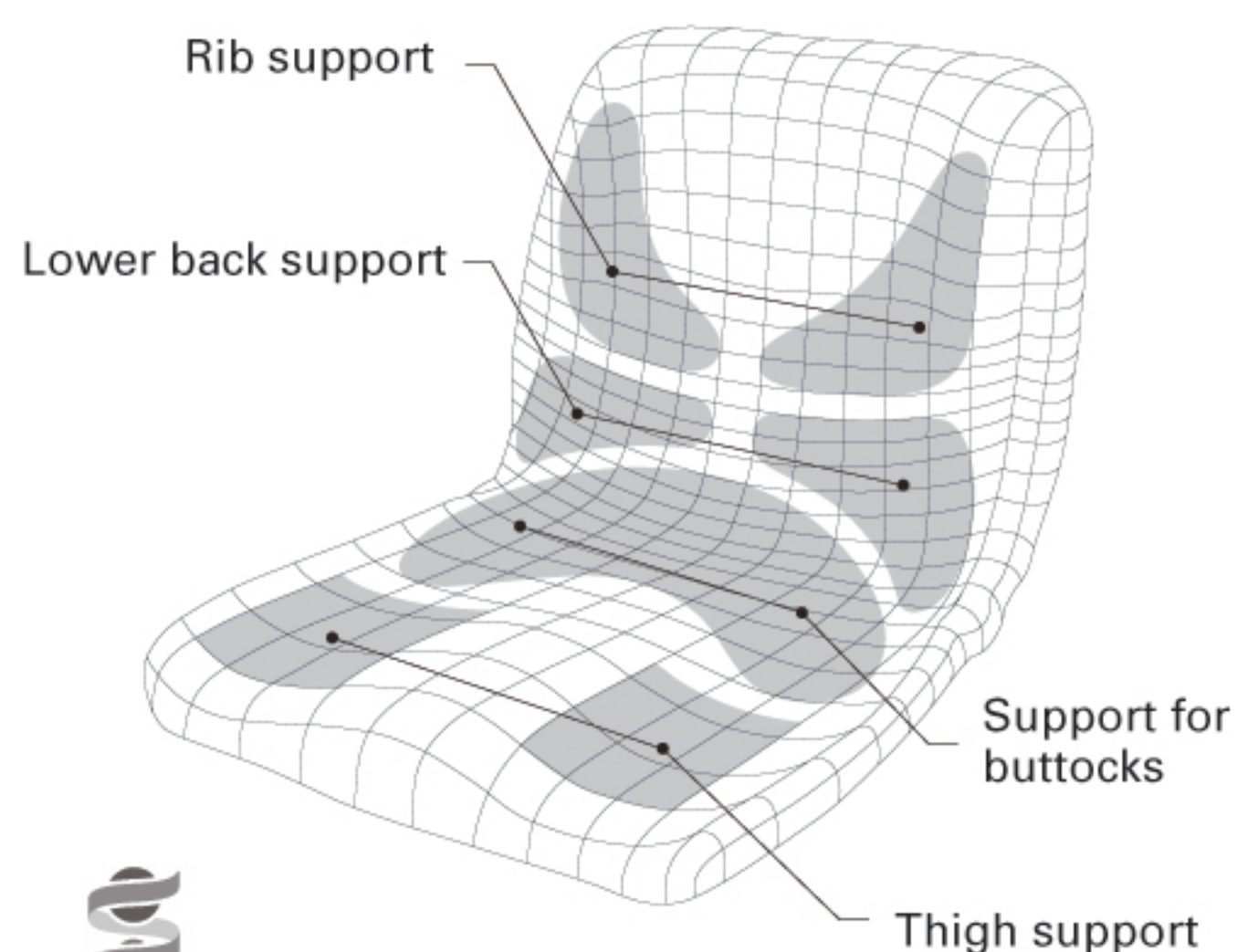




The silhouette of P!NTO includes some secrets to realign your bone structure, which allows you to sit correctly so that you can use your body dynamically. In addition, it gives you a neutral seat so that between each movement, the transition is made in the optimal axis.

The many combinations of fabric and leg types give you the opportunity to create your own personalized and unique P!NTO chair for the office or home.

## 4 ideal integrated supports



### Technical characteristics:

Materials / Polyurethane HR Foam

Structure / Metal + paint

Size & Weight / width 43cm x height 94cm x depth 41cm, 8,8kg

